

Rockhampton Orchid Society Inc.



www.rockhamptonorchidsociety.com.au

PO Box 5949 Red Hill Qld. 4702

Founded 1955

Newsletter April 2014

Editors notes.

Well that's all over for a few months, congrats are due to all the ribbon holders especially the ones holding the blue ones but the autumn show accolades must go to Ken and Rosie two of the nicest people you'd meet in a long days ride. They had one of the most successful shows since they have been exhibiting and I'll bet their chests will stick out for a long time. All in all it was a magnificent effort from every body. The workers behind the scenes organising the things that make a show a success, the ladies in the kitchen were looking a bit frazzled at one stage but they got thru' with out any trouble or hiccups. The line up at one stage was about 6 or 10 deep but they ploughed on as we all knew they would.

Once again we are indebted to our hard working President Jeff and his co pilt Bill for all the wok they do behind the scenes, we are extremely lucky people to have an executive like the one we have.

As this is rather short notice we can't get the results of the show in this months news letter, it was supposed to go to the publishers yesterday but we were all busy with the show so we'll just have to wait. I was sitting down to a nice peaceful cuppa when the phone rang it was Trish wanting to know where the newsletter was as it wasn't in her inbox, I said it doesn't go to the publishers till next week end – "Oh no said Trish our meeting is next week "- Holey Moley and lots of other unmentionable words, panic stations. So my dear members, here it is, what you see is what you get. Does anybody want the newsletter editorship? It's on the market.

This month Sue is writing about those little suckers who are the bane of my life at times. One thing about mealy Bugs you can at least see them most of the time but this is why we tell you to strip your old sheaths because that's where the mongrels hide.

For one of the first times ever we had to pack up in the pouring rain, with thanks to tropical cyclone "Ita" but we managed as usual. It put our attending public numbers down, although I'm not sure as we don't have the "thru' the door figures yet".

Pete & Kate

Notice to Members please assist with cleaning the hall after the meeting

The closing date for articles to be included in the next newsletter are to be received by the 14th of May; articles received after that date will be included in the following month. *Ed.*

Orchid Society Stores

For all your orchid supplies.

Pots many & various as well as many different potting mixes.


BY APPOINTMENT ONLY

*Barry and Faye English:
Ph 49222637*

For Members Only

*Closed Thursday and lunchtime
12 – 2pm.*

(Please note: This work is carried out 7 days a week voluntarily)



Phone 49280199
1 Aquatic Place
North Rockhampton

Sponsors of the Rockhampton Orchid Society

Judges for the Meeting

J. Glover T.Dean

B. Hilse S.Peters

NEXT MEETING

Tuesday. 22/4/14

at 7.30pm

**Plants to be tabled by
7.15pm**

President: Jeff Bloxsom
jmbloxsom@hotmail.com 49286582

Vice President: P.Jenkinson
pe.oni@hotmail.com 419725173

Secretary: Gloria Wakefield
rwa13788@bigpond.net.au 49224289

Treasurer: Bill Richardson
william.r@optusnet.com 49275759

Committee:
Jeff Glover 49287701
Peter & June Shelton 49266889
Jenny Moore 49237234
Ellie Dean 49282278
Trish Craig 49226621
Sandra.Rowcliffe 49281588

New Grower's Leader:
Keith Marsden 49282752

Public Relations: Ellie Dean 49282278

Technical Advisers: John Frisch / J.Glover

Registrar: Terry Dean 49282278

Provider: Maxine Maunder 49283212

Door Monitors/ Hostesses:
Ellie Dean / Lorraine Weaver

Librarians: Jack Martin / P.Shelton

Raffle Plant Caretaker: Terry Dean

Property Officers: B &F English 49222637

Editors: Peter Shelton & Kate Woollett
sheltonpj@optusnet.com 49266889

Asst Editor: Trish Craig 49288093
trishcraig@bigpond.com

Webmaster: R. Lakey 49288093
r.lakey@bigpond.com

New Growers Report.

On Saturday the 29th the new growers were invited to have their meeting at the resident's club rooms at the North Rockhampton Retirement Resort by Peter and June Shelton. What a nice place to have our meeting Pete and June went all out to make us welcome, their efforts were very much appreciated by all.

On arrival the members were invited to look over a large display of craft material that was on display and for sale with all proceeds going to the Royal Flying Doctors.

We then enjoyed afternoon tea in the air conditioned club rooms to start the afternoon (we were very glad of the air con' as it was a very hot humid day.) What a pleasant place to enjoy each others company and to have a chat before getting on with the meeting.

We then discussed the coming show and the ideas from Pete and June's vast knowledge of exhibiting will surely help those who are entering plants and doing displays at the show. This was an ideal time for our members to hear from two very experienced growers on what can be done to better your chances of getting a blue ribbon or a coveted rosette. The afternoon raffle completed the meeting and the members were then invited to stroll down to Pete and June's to look over their orchid collection and gardens and all the other lovely gardens in the complex.

Thank you Pete and June for a very enjoyable afternoon and my sincere thanks to all who were able to come along and thank you for your most generous donations to the raffle..

The next meeting will be at the home of **Ted Page** at the **corner of Rice and Booker streets commencing at 2 P.M. on Saturday the 26th of April.**

The usual plate of goodies for afternoon tea and a folding chair if possible.

Keith Marsden

Phone- 49282752

Monthly Competition Results. March 2014

(Plants tabled: Advanced: 19. Novice: 15.)

Judges Choice:	<i>Cyc. barthiorum</i> x <i>Cyc.</i> Golden Showers	K & R Smith
	<i>Onc.</i> Taka	J & S Frisch
	<i>Den.</i> Masako Taki	B & N Lakey

Popular Vote – Advanced:

Cattleya:	<i>Blc.</i> Alma Kee	B & N Lakey
Dendrobium:	<i>Den.</i> Children of Emaron (not Reg')	J & S Frisch
Miscellaneous:	<i>Cyc. barthiorum</i> x <i>Cyc.</i> Golden Showers	K & R Smith

One can easily see by the numbers of tabled plants there's a show looming not far away. Ed.
Unfortunately due to a technical error all photos of judges choice have been lost.

Rockhampton Orchid Society Inc.
General Meeting Tuesday 25/3/2014

Attendance: As per register

Apologies: As per register

Lucky Member: 121 Sandra Rowcliffe.

Minutes: of previous monthly meeting approved as correct and accurate, Moved Keith Marsden second Bev Powell Carried.

Correspondence: In = Newsletters, Maryborough District Orchid Society Inc, Nambour Orchid News. Redcliff District Orchid Society Inc. Mackay District Orchid Society Inc. Toowoomba Orchid Society Inc, Rockhampton Horticultural Society Inc. Central QLD Bush house Orchid & Succulent Society. Boyne- Tannum Orchid & Foliage Society. Townsville Orchid Society Inc. Nightcliff Orchid Society. Gladstone Orchid & Foliage Society, Bundaberg Orchid Society Inc. Pioneer River Orchid & Plant Association. The Sunshine Coast Orchid Society. STOC QLD, John Rees, Orchids QLD Calendar. Nambour Orchid Society, Membership B. Ledwy, Puckering. 4YOU, Presbyterian Church, Big Colour Works, Australian Orchid Foundation, Post, Kennas Privacy Laws.

OUT = Moved Sharyn Frisch Second by June Shelton Carried.

Treasurers Report: Bill Richardson read and moved second by Pat March Carried.

New Growers: Keith Marsden talked about the members going to the Resort where June & Peter Shelton live, please bring a plate for afternoon tea and you don't have to bring a chair.

General Business: It was moved Peter Shelton second by Ken Smith that The Meal for the Saturday Night will be \$15.00 per Person Carried. It was moved by Peter Jenkinson second by Bill Richardson that the club buy 3 Feather Banners with I free for the price of \$950.00 with GST includes the bags to put them in and water bag.

The theme for the Autumn Orchid Show is "Easter Orchid Spectacular" The planning started for The STOC Meeting for 2014 is in Rockhampton on the 7-8th June. More information will follow.

Plant Commentary: John Frisch great talk and very good information was passed on to everyone Thanks John.

Lucky exhibitor: Richard Mann.

Raffle: Peter Rankin, Bob Lakey, Graham Maunder, Peter Rankin, Bernard Hilse, Jeff Bloxsom, Marg Hadley.

Meeting closed: 9.45 pm.

Next Meeting: 22nd April 2014

Jeff Bloxsom President

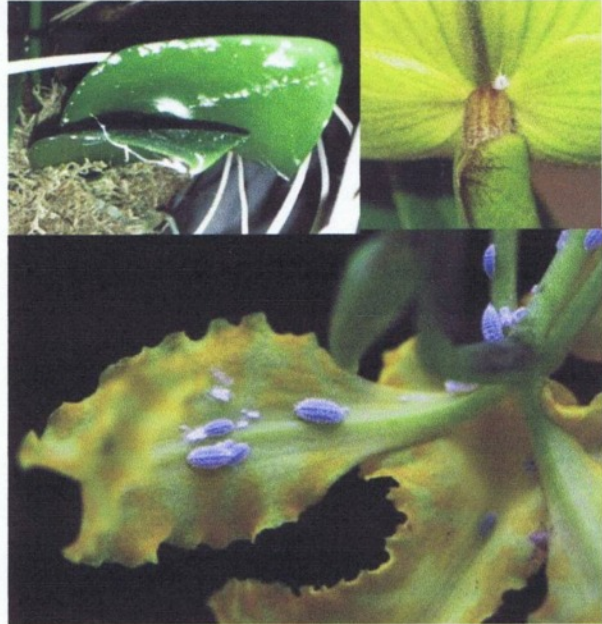
Gloria Wakefield Secretary

Here is part 2 of Sue Bottoms articles on pests & Diseases.

Symptoms and Treatment of Sap Feeding Insects Mealybugs

Symptoms: Mealybugs are sucking insects that attack any part of the plant but tend to stay tucked away at the junction of leaf and stem. Severe infestations cause chlorotic areas to appear on the leaves, which may darken, causing the leaf to yellow and drop prematurely.

Treatment: If there are only a few mealybugs, use a Q tip dipped in isopropyl alcohol or toothbrush dipped in a pesticide like Malathion, Orthene or Safer Soap (used per label instructions) to physically remove the mealybugs. For more severe infestations, apply the pesticide and repeat the application 2 weeks later. Be sure to spray all plant surfaces, particularly the undersides of leaves and leaf axils.



Symptoms and Treatment of Sap Feeding Insects Mealybugs (cont'd)

Treatment (cont'd): A drench with one of the Bayer products containing imidacloprid will also kill them. With the Bayer product containing 1.47% imidacloprid, add 1.5 tsp into a quart of water and pour it through the mix to thoroughly drench the potting mix. The orchid will absorb the imidacloprid through the roots into the leaves and kill the scale from the inside out.

Prevention: Remove old leaf and flower sheaths to eliminate hiding places and allow easy inspection. Check new plants carefully before adding to the growing area.



From RAIN FORESTS AND CLOUD FORESTS.

Most epiphytes depend on their host mainly for support and do little if any damage other than to hold moisture and perhaps facilitate the entry of pathogenic bacteria and fungi.

As trees age, the bark becomes rougher and more amenable to colonization by epiphytes. The smooth bark of a young tropical rainforest tree could possibly be an adaptation to avoid heavy infestations. Bamboos, for example, with thin ultra – smooth bark, rarely support any epiphytes larger than lichens. Little is known about the capacity of bark to secrete anti - epiphyte compounds but such may well exist, for the epiphytic burden of mangroves is always meager and may be related to the high levels of tannin in the bark.

The hazards of being an epiphyte revolve around remaining in position, acquiring nutrients and resisting periodic droughts, for sunlight and atmospheric carbon dioxide are available in abundance. Thin rooting systems are principally holdfasts for binding tightly to the bark of the trunk or limb, although small quantities of nutrients may be extracted by some epiphytic species.

The root tissue of many epiphytes has an outer layer of dead cells which absorb moisture from the atmosphere when it is humid but which contract to form a waterproof covering when they are dry. Specialised cells below the dead layer pass any absorbed water to conducting cells which take it to other parts of the plant.

Perhaps the most critical factor in the growth of epiphytes is the supply of nitrogen. Some epiphytic blue – green algae and those lichens with the appropriate algae – fungus association are able to synthesize soluble nitrogen from atmospheric nitrogen but for the remainder of the epiphytes the only source is from detritus within reach of the roots and perhaps dissolved in rain during thunder storms. Only those epiphytes which are relatively low in the forest canopy are favored by fruit, seeds, leaf litter, animal faeces and feeding waste falling down from above.

Epiphytic rooting systems usually form a bird's nest like network which is extremely successful in trapping detritus. The leaves may also assist in trapping litter by forming a cup against the bark of the tree. The winds that blow across the forest canopy will bring some organic dust although the extent of such additional nutrients is important only at the margins of the forest.

The ensheathing root system of epiphytes provide good nesting sites for ants and these insects are perhaps the most beneficial source of nitrogen, for their faeces, feeding waste and nest building materials all contain valuable nutrients.

Taken from the Bulletin of the U.S.S.E.A. 19/3/41.

Did you know?

Every year enough potatoes are grown worldwide to cover a four lane highway circling the earth six times.

AUSTRALIAN NATIVE ORCHIDS.

When one thinks of growing native orchids, ones thoughts go to local species of which there are surprisingly quite a few.

Up front, you would have to put *Dendrobium. speciosum var capricornicum*. In their natural habitat, they very rarely (if not never) grow on trees but are found on bare sand stone cliffs or growing in fine silver coloured sand. Rather difficult to cultivate but well worth a try. Pot in sand with an assortment of various sized rocks (not sharp) or if your pocket is deep enough, a sand stone slab from your local landscaper is the ultimate. Tie on firmly but not tight.

Dendrobium discolor, a quite prolific orchid can grow to rather sizeable dimensions whether mounted or potted, so give room, especially upwards. In collections they are grown mostly potted, the main reason is, if mounted, the mount is very quickly engulfed and keeping them upright can present a problem. Like all Dens don't overpot, placed in a pot just large enough to contain the root ball in a free draining mix. Water and fertilise freely in the growth period, back off in the cooler months with just enough water to stop the canes from withering.

Dendrobium teretifolium, any varieties of this genus grow well in the C.Q. area. Mounted on a cork bark or ironbark slab in a bright airy position and they will thrive, they're slow growers but have a tendency to flower early in their new growth.

Dendrobium tetragonum, perhaps the easiest of these to grow is the var. *giganteum* (now known as *Den. capitisyork*) mounted on cork bark or a rough weathered wooden slab seems the way to go. Cultivate as for *discolor* re' watering.

Dendrobium aemulum, commonly known as the iron bark orchid, consequently grow on a slab of that bark but will attach itself to most weathered bark mounts. Place in a bright airy position of the bush house, and water daily in its growth period backing off in the cooler months. This is one of the few natives that enjoy high nitrogen (30:10:10) very free to flower but plant longevity is short, 3 to 5 years. (Of course there are exceptions.)

Dendrobium monophyllum, it's a traveler, so mounted is its preferred love, rather slow to grow; allow it to dry out between waterings. When tying to a mount it is essential to tie firmly but don't choke it, like all plants on mounts they must have no movement at all, if they have movement they will not grow roots. This *Den.* will flower at any time of the year.

Dendrobium canaliculatum, there are five varieties not including var. *canaliculatum* but this is the one you want to try and grow, I say try because they are very finicky about their host and position in the bush house. Growing them outside the bush house is probably best with them mounted on a piece of weathered timber. All I can say is good luck.

Dendrobium carroni, closely related to *Den. canaliculatum* it can be grown in the same manner. The best I have seen have all been mounted plants.

Dendrobium bigibbum, takes to pot or mounted culture well, extremely hardy, keep dry in the cooler months.

Dendrobium x superbiens, a natural hybrid between *D. bigibbum* and *D. discolor*, potted or mounted, it does quite well.

Rhinerriza divitiflora, my favorite Oz native, best grown on a tree fern slab and kept moist backing off in the cooler months. The flowers are of an orange hue spotted red, the buds stay very small until conditions are right then all buds open at the same time. Like a lot of the Oz natives the flowers are short lived but beautiful. These are but a few of the native Dens that can be grown successfully in the C.Q. area. Also the many hybrids with these as parents will serve you well.

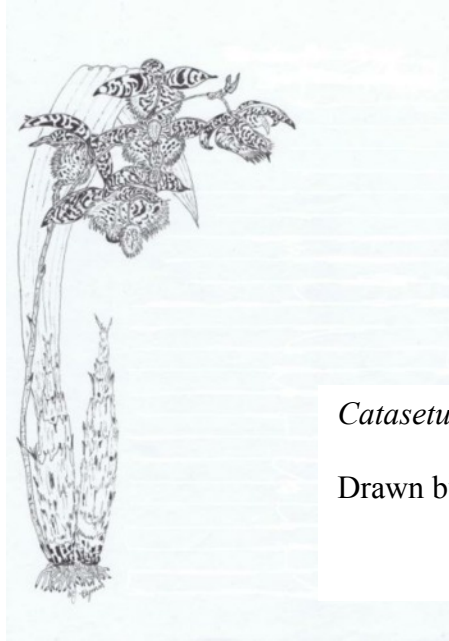
Hymn.

Rockhampton Orchid Society Inc.

If undelivered, please return to
Rockhampton Orchid Society Inc.
PO Box 5949
Central Queensland Mail Centre, Qld 4702

Print Post Approval PP 448679/00002

**Postage Paid
Central Queensland
Mail Centre
Qld. 4702
AUSTRALIA**



Catsetum Francis Nelson

Drawn by *Hymn*

Rockhampton Orchid Society Inc.
www.rockhamptonorchidsociety.com.au

Meetings are held on the fourth Tuesday of each month (excluding December) at St Stephens Presbyterian Church Hall, Burnett Street, Nth. Rockhampton. Meetings commence at 7.30pm and plants must be tabled by 7.15pm

Disclaimer

Rockhampton Orchid society Inc. disclaims all responsibility for any losses or damage, which may attributed to the use or misuse of any material published in this Newsletter

Your Orchid Diary 2012

May 3rd 4th – Gympie Garden Expo & O/S Show
May 9th 11th Bundaberg O/S Show

June 7th STOCQ meeting Rockhampton

July 4th - 6th (118) Caboolture Orchid Soc

August 9th – 10th Maroochydore O/S Show

March 15th - Childers & Isis District O/S Spring Show

September 5th – 6 Nambour O/S Show

September 13th – 14th Rockhampton Spring Show

September 5th – 6th Nambour Spring Show

September 19 – 21st Maryborough Show

September 26th – 27th Glasshouse Country O/S Show

2014 TQOC Atherton

2015 TQOC Mackay